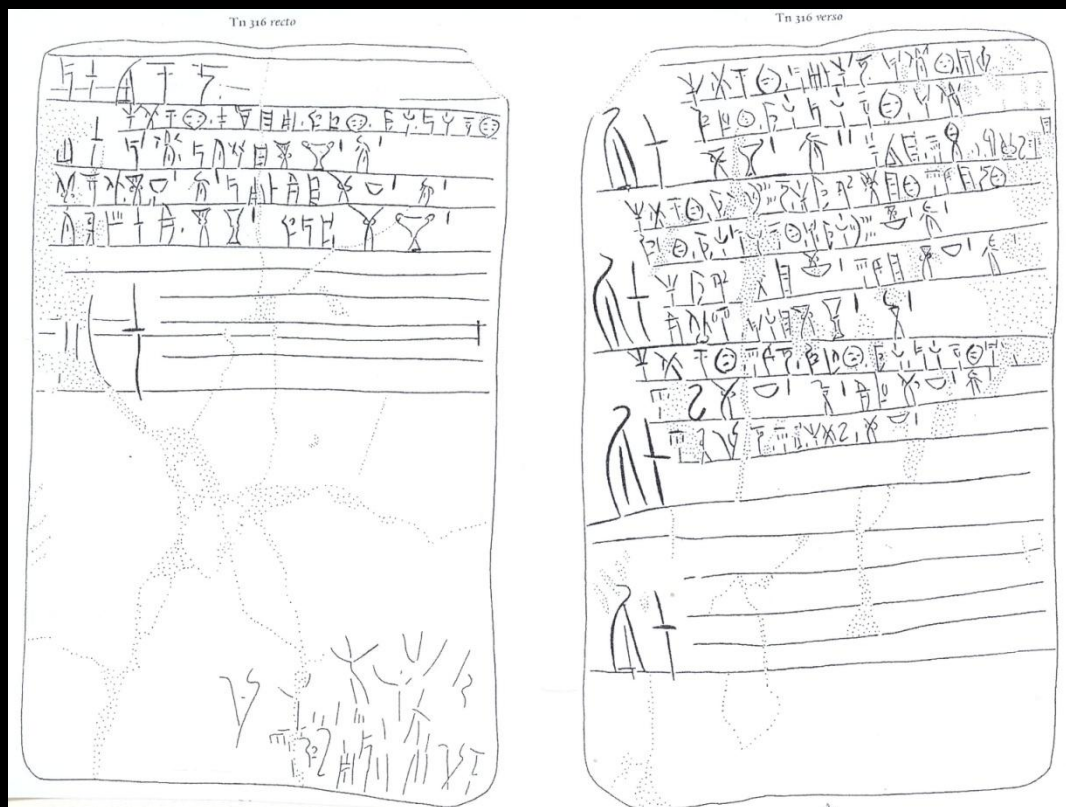
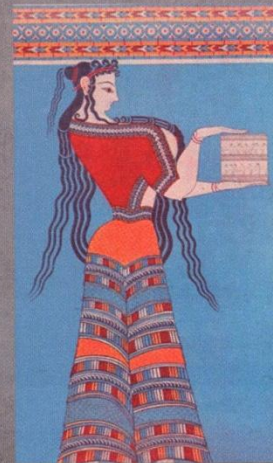
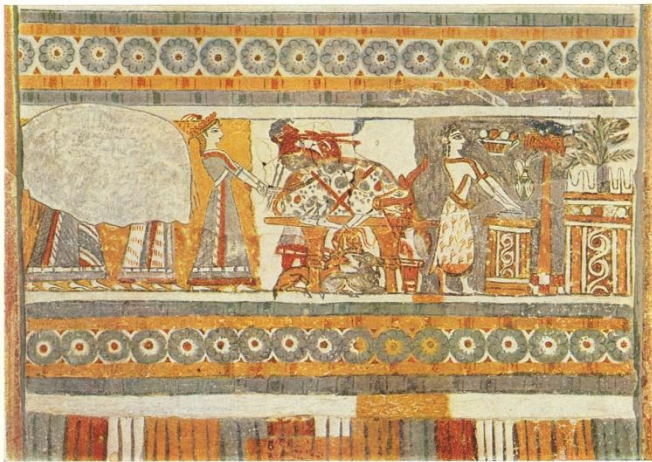


Η θρησκεία των Μυκηναίων μέσα από τα κείμενα της Γραμμικής Β

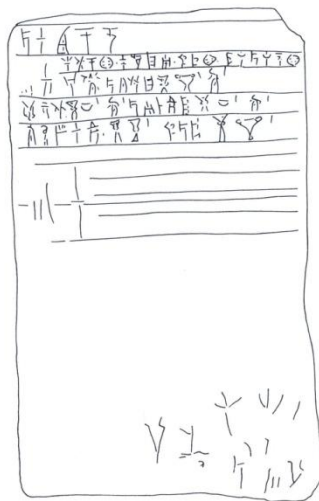
Χρήστος Μπουλώτης
Κ.Ε.Α της Ακαδημίας Αθηνών







Εικόνα της πινακίδας PY Tn 316 κατά την έκδοση E. L. Bennett, The Pylos Tablets. Texts of the Inscriptions Found, 1939-1954, Princeton 1955.



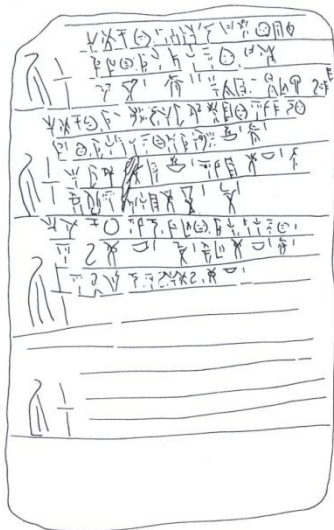
Ἐμπρός πλευρά

Ἀνάγνωση τῆς πινακίδας PY Tn 316 με βάση τὴν ἀποκρυπτογράφηση τοῦ Ventris.

porowitojo
 PURO *ijetoqe pakjasi doraqe pere porenaqe*
ake poinitia XPUΣO KYΠEΛAO 1 ΓYNAIKΑ 1
manasa XPUΣO KYΠEΛAO 1 ΓYNAIKΑ 1 possidajio XPUΣO KYΠEΛAO 1 ΓYNAIKΑ 1
itiseroc XPUΣO KYΠEΛAO 1 dopota XPUΣO KYΠEΛAO 1

PURO

Η πινακίδα PY Tn 316
 (recto)



Πίσω πλευρά

PURO *ijetoqe possidajio akeqe watu*
doraqe pere porenaqe ake
XPUΣO KYΠEΛAO 1 ΓYΝ. 2 gonija [-] komaweteja
ijetoqe pere82jo ipemedaja < jo > qe diujajoqe
 PURO *doraqe pere porenaqe a < ke > pere82 XPUΣO KYΠEΛAO 1 ΓYΝ. 1*
ipemedaja XPUΣO KYΠEΛAO 1 diujia XPUΣO KYΠEΛAO 1 ΓYΝ. 1
emaa, areja XPUΣO KYΠEΛAO 1 ANAPAS 1
 PURO *ijetoqe diujo doraqe pere porenaqe akε*
diwe XPUΣO KYΠEΛAO 1 ANAPAS 1 era XPUΣO KYΠEΛAO 1 ΓYΝ. 1
dirimijo diwo ijewe XPUΣO KYΠEΛAO

PURO

Η πινακίδα PY Tn 316
 (verso)



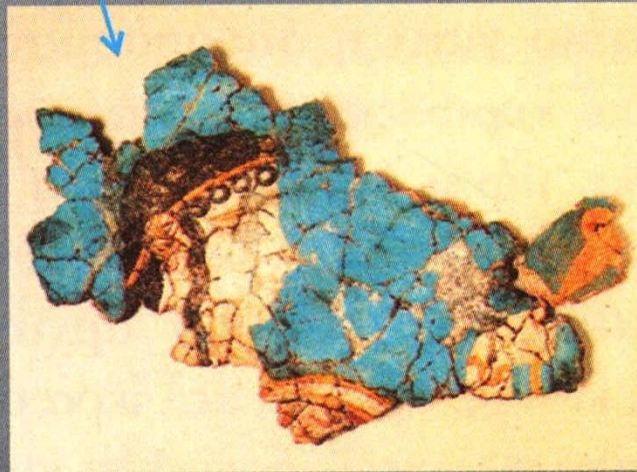
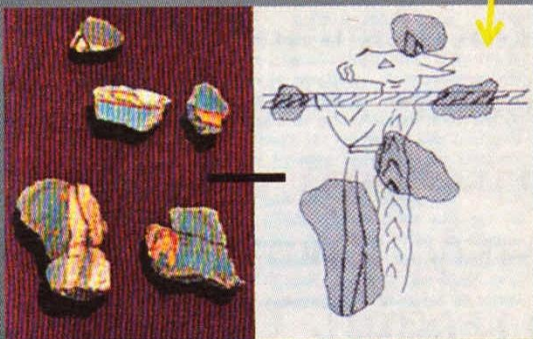
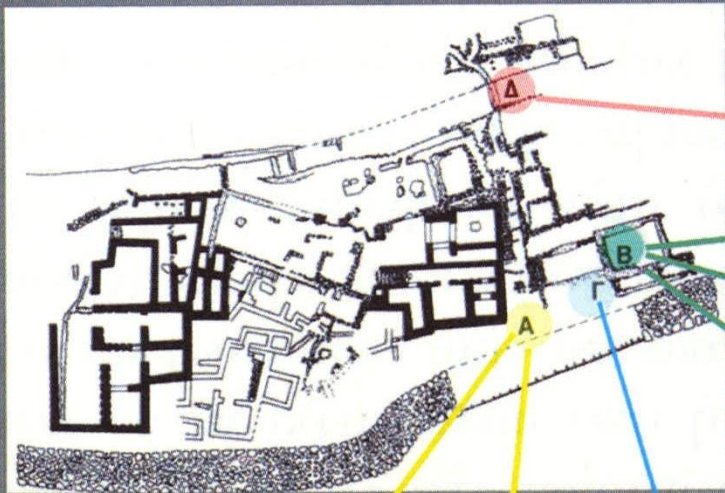
Fp(1) 1 + 31

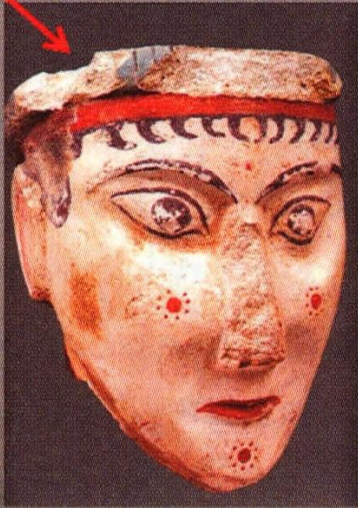
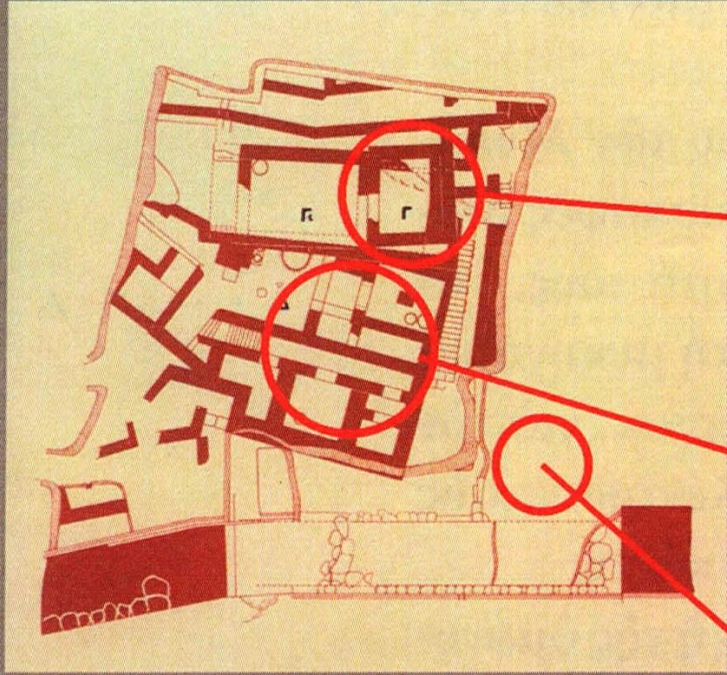


A

138

- .1 de-u-ki-jo-jo 'me-no'
 .2 di-ka-ta-jo / di-we OLE s 1
 .3 da-da-re-jo-de OLE s 2
 .4 pa-de OLE s 1
 .5 pa-si-te-o-i OLE 1
 .6 qe-ra-si-ja OLE s 1[
 .7 a-mi-ni-so ,/ pa-si-te-o-i s 1[
 .8 e-ri-nu , OLE v 3
 .9 *47-da-de OLE v 1
 .10 a-ne-mo ,/ i-je-re-ja v 4
 .11 *vacat*
 .12 to-so OLE 3 s 2 v 2
 .2 *ka* perhaps over erasure.
 .6-7 The numeral on one of these lines must be restored as 2 to produce the total.
 .9 *47 perhaps over erasure.



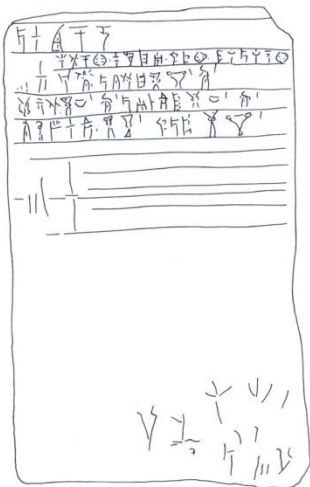




Θεωνύμια στις μυκηναϊκές Πύλες.

Tafelnr.	Theonym (+ fakultative Ortsangabe)	Opfergabe
Un 219	a-ti-mi-te	O
Tn 316	di-ri-mi-jo (di-u-jo)	*213 ^{VAS}
Tn 316	di-we (di-u-jo)	*213 ^{VAS} , VIR
Tn 316	di-u-ja (di-u-ja-jo)	*213 ^{VAS} , MUL
Xa 1419	di-wo-nu-so	
Tn 316	do-po-ta (pa-ki-ja-si)	*215 ^{VAS}
Tn 316; Un 219	e-ra (di-u-jo)	U, *213 ^{VAS} , MUL
Tn 316; Un 219	e-ma-a ₂	U, *216 ^{VAS} , VIR
Tn 316	i-pe-me-de-ja (i-pe-me-de-ja<-jo>)	*213 ^{VAS}
Fa 16	i-qa (?)	CYP+O
Tn 316	ko-ma-we-te-ja (?) (po-si-da-i-jo)	*215 ^{VAS} , MUL
Tn 316	ma-na-sa (pa-ki-ja-si)	*213 ^{VAS} , MUL
Fr 1202	ma-te-re te-i-ja	OLE
Cn 3	me-za-na (?)	BOS
Un 219	pa-de-we (?)	O
Tn 316; Un 6	pe-re-*82 (pe-re-*82-jo)	BOS ^f , OVIS ^f , SUS ^f , SUS+KA *213 ^{VAS} , MUL
Fr 1218, 1221, 1232	po-ro-wi-to (?)	OLE
Es-Serie; Fr 343, 1219, 1224 Un 6, 718, 853; Xn 1439 Fn ₍₁₎ 970 (?)	po-se-da-o-ne (sa-ra-pe-da?)	VARIA
Tn 316	po-si-da-e-ja (pa-ki-ja-si)	*213 ^{VAS} , MUL
An 1281; Fr 1231,1235 Tn 316; Un 219	po-ti-ni-ja (pa-ki-ja-si, po-ti-a-ke-si)	OLE, *215 ^{VAS} , MUL, (VIR)
Fr 1206	po-ti-ni-ja a-si-wi-ja	OLE
An 1281; Fn ₍₁₎ 867 (?)	po-ti-ni-ja i-qa-ja (o-pi-e-de-i)	(VIR), HORD (?)
Vn 48	e-re-wi-jo-po-ti-ni-ja	
Fn 187; Fr 1225, 1236	u-po-jo po-ti-ni-ja (pa-ki-ja-ni-jo a-ko-ro)	HORD, NI, OLE
Tn 316	qa-wi-ja (?) (po-si-da-i-jo)	*215 ^{VAS} , MUL
Fr 1226, 1335	te-o-i (ro-u-si-jo a-ko-ro)	OLE
Fr 1204, Tn 316	ti-ri-se-ro-e (pa-ki-ja-si)	OLE, *216 ^{VAS}
Fr 1215, 1220, 1227, 1235 Mb 1402; Un 219, 1426	wa-na-ka-te (ro-u-si-jo a-ko-ro)	OLE, *146, TE, GRA

Εικόνα της πινακίδας PY Tn 316 κατά την Έκδοση E. L. Bennett, The Pylos Tablets. Texts of the Inscriptions Found, 1939-1954. Princeton 1955.



Ἐμπρός πλευρά

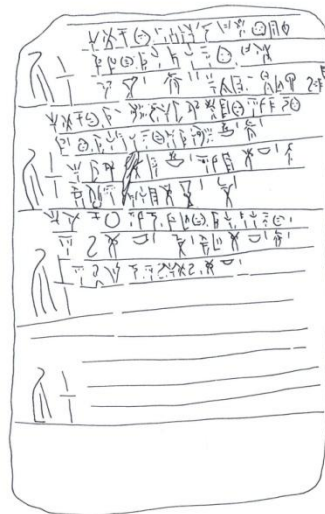
Ἀνάγνωση τῆς πινακίδας PY Tn 316 με βάση τὴν ἀποκρυπτογράφιση τοῦ Ventris.

porowitojo

PURO *ijetoqe pakijasi doraze pere porenaze*
ake porinjia XRYΣO KYΠEΛAΩ I ΓYNAIKAI I
manasa XRYΣO KYΠEΛAΩ I ΓYNAIKAI I possidajia XRYΣO KYΠEΛAΩ I ΓYNAIKAI I
tiriseroe XRYΣO KYΠEΛAΩ I dorota XRYΣO KYΠEΛAΩ I

PURO

Η πινακίδα PY Tn 316
 (recto)



Πίσω πλευρά

PURO

ijetoqe possidajio akeqe watu
doraze pere porenaze ake
XRYΣO KYΠEΛAΩ I ΓYH. 2 qowija [] komaweteja

PURO

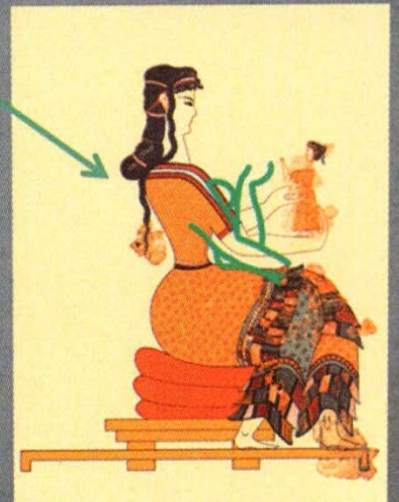
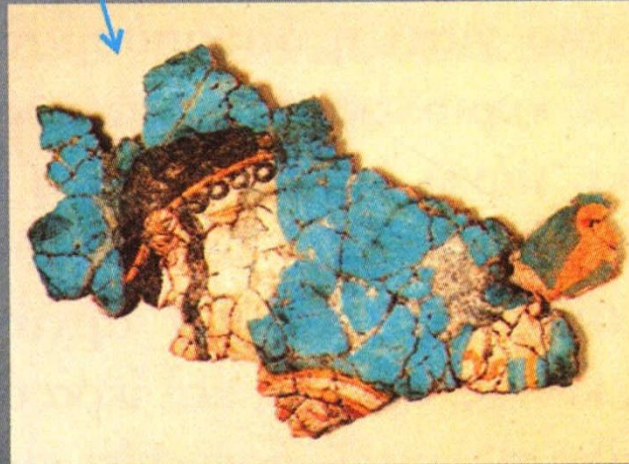
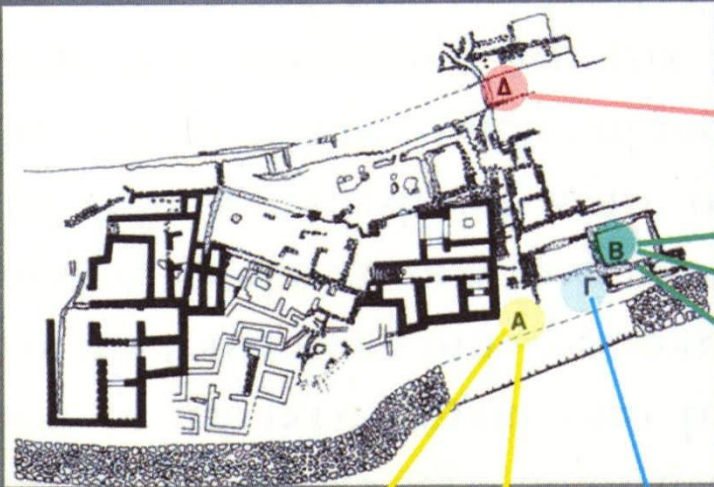
ijetoqe peresjio ipemedaja < jo > qe diujioqe
doraze pere porenaze a < ke > peresj XRYΣO KYΠEΛAΩ I ΓYH. I
ipemedaja XRYΣO KYΠEΛAΩ I diujia XRYΣO KYΠEΛAΩ I ΓYH. I
emaas, oreja XRYΣO KYΠEΛAΩ I ANAPAS I

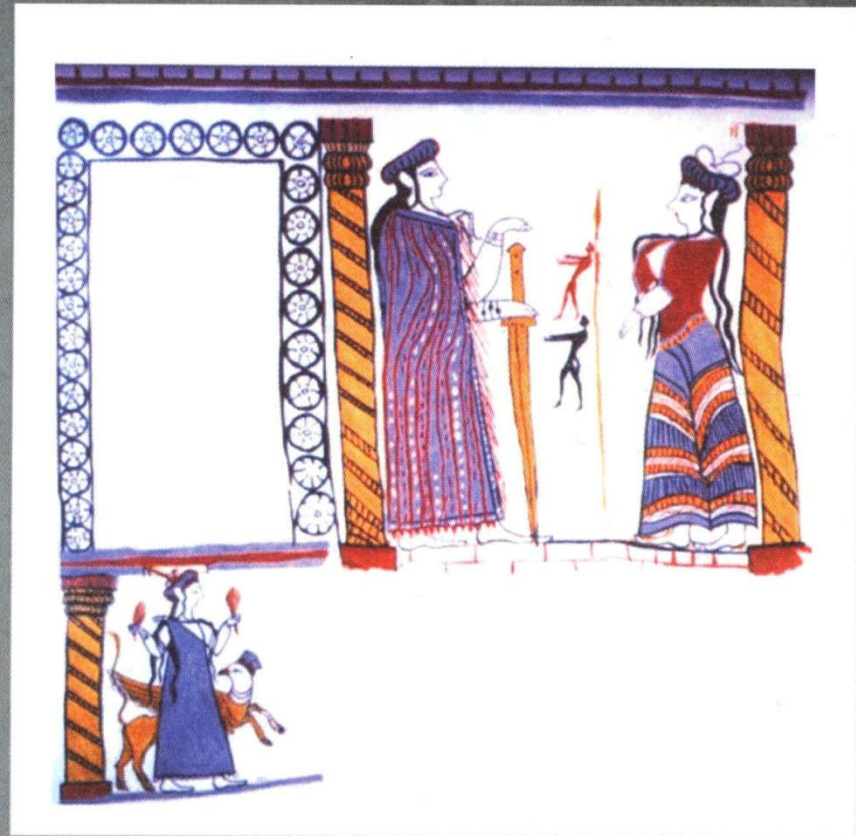
PURO

ijetoqe diujio doraze pere porenaze ake
diwe XRYΣO KYΠEΛAΩ I ANAPAS I era XRYΣO KYΠEΛAΩ I ΓYH. I
dirimijio diwo ijewe XRYΣO KYΠEΛAΩ

PURO

Η πινακίδα PY Tn 316
 (verso)



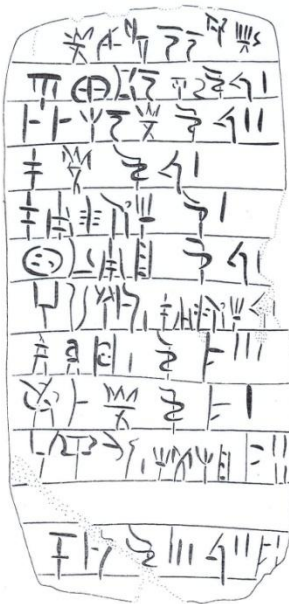


Θεωνύμια στις πινακίδες Κνωσού (και Χανίων)

Tafelnr.	Theonym (+ fakultative Ortsangabe)	Opfergabe
Fp ₍₁₎ 1, 13	a-ne-mo (u-ta-no)	OLE
Fh 9070; Gg ₍₃₎ 5185	a-pa-to-re (ti-ri]-to)	OLE, ME+RI *209 ^{VAS}
Fp ₍₁₎ 14; Mc 4462 (?)	a-re (ti-ri-to)	OLE, *150
Fs 3, 20	a-*65-ma-na-ke (?)	VARIA
Gg 701	da-nwa (?) (pa-i-to)	ME+RI *209 ^{VAS} +A
E 842; F ₍₁₎ 51; Fp ₍₁₎ 1; KH Gq 5	di-we (di-ka-ta-jo, di-wi-jo)	OLE, HORD, ME+RI *209 ^{VAS}
Xd 97	di-wi-ja	
KH Gq 5	di-wo-nu-so (di-wi-jo)	ME+RI *209 ^{VAS}
X 9669	e-ma-a ₂	
Gg ₍₃₎ 717; M 719; Gg ₍₃₎ 705 (?), 5185 (?) Gg ₍₁₎ 704 (??)	e-ne-si-da-o-ne (a-mi-ni-so)	ME+RI *209 ^{VAS} , *146
V 52	e-nu-wa-ri-jo	
Gg ₍₃₎ 705; Od ₍₂₎ 714-16	e-re-u-ti-ja (a-mi-ni-so)	ME+RI *209 ^{VAS} , LANA
Fh 390; Fp ₍₁₎ 1; V 52	e-ri-nu	OLE
Fp ₍₂₎ 354	ka-ra-e-i-jo (?)	OLE
Ga ₍₁₎ 685	ko-sa-ma-to (?)	KO
F ₍₁₎ 51	ma-qe/ma-ka (?)	HORD
As ₍₂₎ 1519; Ga ₍₁₎ 674, 7594; Gg ₍₂₎ 713; X 7828	ma-ri-ne-we	ME+RI *209 ^{VAS} , PYC, KO (VIR)
Fp ₍₁₎ 1, 48; Fs 8; Ga ₍₃₎ 456, Ga 953 C 394 (?)	pa-de(-i)	OLE, PYC, KO, VARIA LANA/MA, ? [OVIS]
Fp ₍₂₎ 354	pa-ja-ni-jo (?)	OLE
V 52	pa-ja-wo-ne	
Ga 953, 5672; X 451	pa-sa-ja	? [KO, LANA/MA]
Fp ₍₁₎ 1, 5, 6, 13-16, 18, 48; Ga 953 Gg ₍₁₎ 702, Gg ₍₃₎ 705, 717	pa-si-te-o-i (a-mi-ni-so,]-jo-de)	OLE, ME+RI *209 ^{VAS} KO, LANA/MA
Fp ₍₁₎ 13	pi-pi-tu-na	OLE
V 52; X 5560; Gg ₍₁₎ 704 (??)	po-se-da-o-ne	
M 729	po-ti-ni-ja	? [*146]
V 52	a-ta-na-po-ti-ni-ja	
Gg ₍₁₎ 702; Oa 745; Xd 140; X 9201	da-pu ₂ -ri-to-jo po-ti-ni-ja	ME+RI *209 ^{VAS} , *166+WE
Fh 5475; Fp ₍₁₎ 1, 5, 6, 13, 14, 48	qe-ra-si-ja	OLE
Fp ₍₁₎ 16, 18	qe-ra-si-jo (]-jo-de)	OLE
Fp ₍₁₎ 48; X 451	si-ja-ma-to	OLE
E 842; Gg 10; X 9747 (?)	te-o(-i) (me-a-de)	ME+RI *209 ^{VAS} , OLIV, PYC
F ₍₁₎ 51; Ga ₍₁₎ 675	wa-na-ka-te	HORD, KO
Fh 1057, 9077; Fp ₍₁₎ 15; Fh 5487 (?)	*56(-i)-ti	OLE



Ep(1) 1 + 31



A

138

- .1 de-u-ki-jo-jo 'me-no'
 .2 di-ka-ta-jo / di-we OLE S 1
 .3 da-da-re-jo-de OLE S 2
 .4 pa-de OLE S 1
 .5 pa-si-te-o-i OLE 1
 .6 qe-ra-si-ja OLE S 1[
 .7 a-mi-ni-so ,/ pa-si-te-o-i S 1[
 .8 e-ri-nu , OLE V 3
 .9 *47-da-de OLE V 1
 .10 a-ne-mo ,/ i-je-re-ja V 4
 .11 *vacat*
 .12 to-so OLE 3 S 2 V 2
 .2 *ka* perhaps over erasure.
 .6-7 The numeral on one of these lines must be restored as 2 to produce the total.
 .9 *47 perhaps over erasure.

Ἱερά σε τιμακίδες Πύλου

Tafelnr.	Heiligtum	Theonym	Opfergabe
Tn 316	di-u-ja-jo	di-u-ja	*213 ^{VAS} , MUL
Fr 1230; Mb 1366 Tn 316	di-wi-jo/di-u-jo	di-we, e-ra, di-ri-mi-jo	OLE, *146 *213 ^{VAS} , VIR, MUL
Tn 316	i-pe-me-de-ja<-jo>	i-pe-me-de-ja	*213 ^{VAS}
Tn 316	pe-re-*82-jo	pe-re-*82	*213 ^{VAS} , MUL
Fn 187; Tn 316	po-si-da-i-jo	qo-wi-ja (?), ko-ma-we-te-ja (?)	HORD, NI, *215 ^{VAS} , MUL
Vn 48	ki-wo-na-de		
An 1281	o-pi-e-de-i	po-ti-ni-ja i-qe-ja	(VIR)
Sh 736	wo-ke	me-za-na (?)	(to-ra-ke)

Ἱερά σε τιμακίδες Κνωσού

Tafelnr.	Heiligtum/kultische Einrichtung	Theonym	Opfergabe
Fp ₍₁₎ 1; Fs 32; X 723	da-da-re-jo-de		OLE, VARIA
KH Gq 5	di-wi-jo-de	di-we	ME+RI *209 ^{VAS}
Fp ₍₂₎ 363	da-*83-ja-de i-je-ro		OLE
Fh 2013	pe-da i-je-[ro		OLE
Fh 5467]de i-je-[ro		OLE
As ₍₂₎ 1519; Gg 7792; L 698	wo-ke/wo(-i)-ko-de	*ma-ri-ne-u	ME+RI *209 ^{VAS} , (VIR)

Εορτές σε πινακίδες Νίλου

Tafelnr.	Festname	Empfänger	Opfergabe	Schreiberhand
Fr 1218	di-pi-si-je-wi-jo (?)	po-ro-wi-to	OLE+A S 1	cii-S1217
Fr 1202	me-tu-wo ne-wo	ma-te-re te-i-ja	OLE+PA 5 S 1 V 4	2-S1202
Fr 343	re-ke-to-ro-te-ri-jo	po-se-da-o-ne	OLE []	4-S343
Fr 1217	re-ke-e-to-ro-te-ri-jo	pa-ki-ja-na-de	OLE+A V 1	cii-S1217
Fr 1222	to-no-e-ke-te-ri-jo	wa-na-so-i	OLE+PA V 1	2-S1202
Fr 1215	wa-na-se-wi-jo (?)	wa-na-ke-te	OLE	cii-S1219
Fr 1221	wa-na-se-wi-ja (?)	po-ro-wi-to	OLE+A S 1	cii-S1219
Ua 1413	po-re-no-tu-te[-ri-ja (?)	ro-u-si-jo a-ko-ro	*146 7, *166+WE 1	ci
Un 443	po-re-no-zo-te-ri-ja (?)		LANA 3	6-S6

Εορτές σε πινακίδες Κνωσού

Tafelnr.	Festname	Schreiberhand	Fundort
Ga 1058+5671	te-o-po-ri-ja	135 (?)	K1 (?)
Od ₍₁₎ 696	te-o-po-ri-ja	103	F19
C ₍₂₎ 914	a-ka-wi-ja-de (??)	112	I3

ΜΗΝΕΣ ΚΝΟΣΟΥ

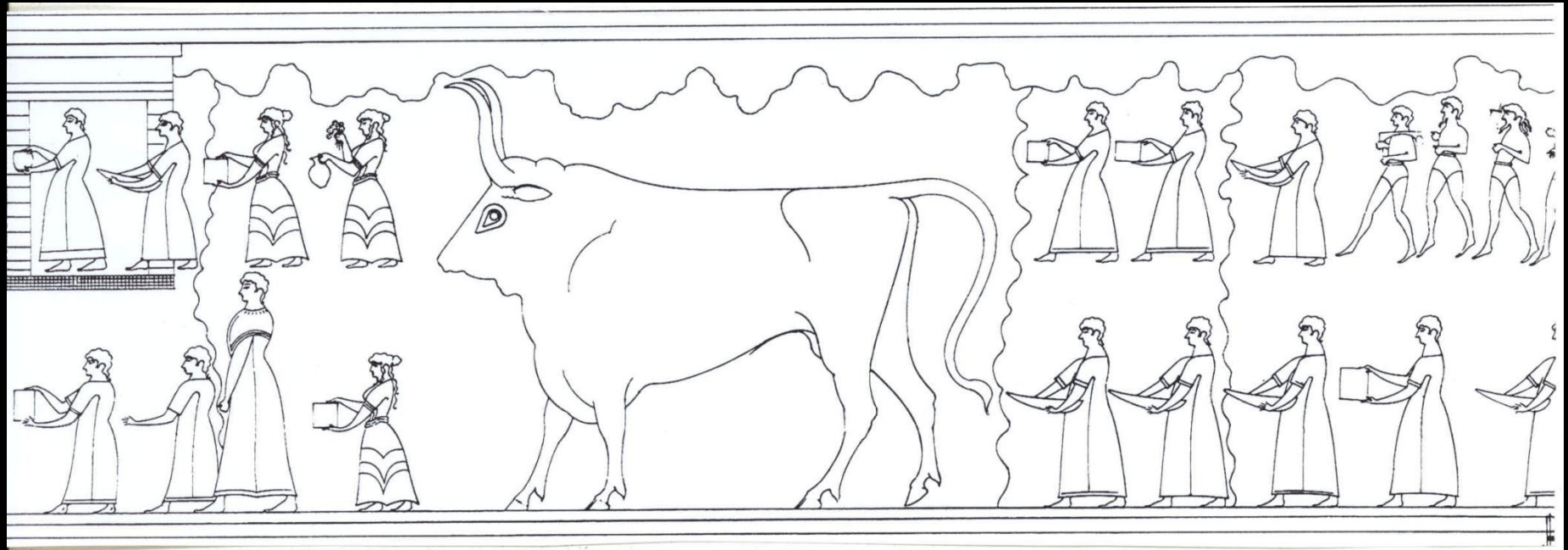
Tafelnr.	Monatsname	Opfergabe	Schreiber	Fundort
Oa 745	a-ka-[•••]ri-••-jo-jo me-no	ri *166+WE	140 (?)	H4
Fp ₍₁₎ 14	a-ma-ko-to me-no	OLE	138	A
Fp ₍₁₎ 1	de-u-ki-jo-jo me-no	OLE	138	A
Fp ₍₁₎ 5	di-wi-jo-jo me-no	OLE	138	A
Fp ₍₁₎ 6, 7, 15, 18	ka-ra-e-ri-jo (me-no)	OLE	138	A
Gg ₍₁₎ 7369	ka-ra-e-ri-jo me-no	me-ri	103	G1
M ₍₁₎ 1645	ka-ra-e-ri-jo-jo me-no	*146	103	G1 (?)
Fp ₍₁₎ 13	ra-pa-to me-no	OLE	138	A
X 999	sa-pa-nu-wo me-no		?	I3
Fp ₍₁₎ 16, 48	wo-de-wi-jo me-no	OLE	138	A
Ga 953+955	wo-de-wi-jo-jo me-no	KO, LANA/MA	219	I3
V ₍₂₎ 280	wo-de-wi-jo		„124“	C
F 726]wi-jo-jo	OLE	?	G1
Gg ₍₁₎ 704, 5552, 8053] me-no	me-ri *209 ^{VAS} +A	103	G1
Ga 5672] me-no	LANA/MA	219 (?)	I3 (?)
M 724] me-no (?)	*146	?	G1

ΜΗΝΕΣ ΠΥΛΟΥ

Tafelnr.	Monatsname	Schreiberhand
Es 650	ki-ri-ti-jo-jo (?)	11
Fr 1224	pa-ki-ja-ni-jo-jo me-no	2-S1202
Tn 316	po-ro-wi-to-jo	44

Un 2

- .1 pa-ki-ja-si , mu-jo-me-no , e-pi , wa-na-ka-te
- .2 a-pi-e-ke , o-pi-te-ke-e-u
- .3 HORD 16 T 4 CYP+PA T 1 V 3 o V 5
- .4 FAR 1 T 2 OLIV 3 T 2 *132 S 2 ME S 1
- .5 NI 1 BOS 1 OVIS^m 26 OVIS^f 6 CAP^m 2 CAP^f 2
- .6 SUS+SI 1 SUS^f 6 VIN 20 S 1 *146 2



Un 6

.1 po-se-ḍa[-o-ne] BŎŞ^f [] ỌVỊŞ^f []SUS+KA 1 SUS^f 2

.2 vacat

.3 pe-re-*82 BOS^f 1 OVIS^f 1 SUS+KA 1 SUS^f 2

.4 pe-re-*82 BOS^f 1 OVIS^f 1 SUS+KA 1 SUS^f 2

.5 vacat

.6 *146 37 *166+WĒ[]LANA 5

.7 AREPA S 1 V 1[

.8 BOS^m 2 BOS^f 2 ỌVỊŞ^x[



v.1]i-je-re-ja TELA+TĒ[

v.2 ka-]ra-wi-po-ro TELA+TĒ[