

enterprise europe network

Helping ambitious SMEs
innovate and grow internationally





3000
LOCAL
EXPERTS



600
LOCATIONS
+



60+
COUNTRIES
WORLDWIDE

How do we help?



We combine **international business expertise** with **local knowledge** to take your innovation into new markets.

A broad range of services for growth-oriented SMEs

INTERNATIONAL PARTNERSHIPS

Partnership database

Brokerage events

Company missions

ADVISORY SUPPORT

Advice on EU laws and standards

Market intelligence

IPR expertise

INNOVATION SUPPORT

Access to finance and funding

Innovation Management Services

Technology transfer

How it works: international partnerships

The Network's business database contains thousands of company profiles to find the perfect match. In addition we organise:

Matchmaking events across Europe where SMEs can meet potential business partners in person.

Company missions where we set up and prepare you for targeted international meetings with strong business prospects



How it works: advisory support

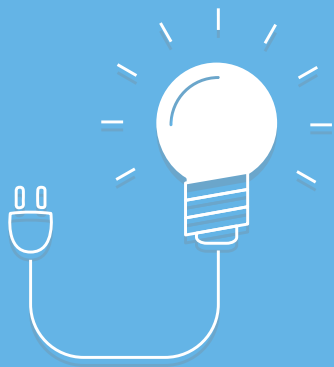
The Network's experts provide tailor-made advice



- | Practical advice on doing business in another country
- | Identifying the best market opportunities for your business
- | Information on EU laws and standards
- | Advice on intellectual property
- | Facilitating SME feedback on EU rules

How it works: innovation support

Tailored support packages to steer you onto the fast track to success.



- | Advice and help for innovative SMEs to access R&I funding (H2020, SME Instrument)
- | KAM services for SME Instrument beneficiaries
- | Personalised support to help shape innovation potential into international commercial success
- | Help in finding the right technology to improve your innovation
- | Help in finding the finance it needs to grow.

How it works: innovation support

Growth and international success
In 3 years, Crypteia's annual turnover increased x 20 and its workforce quadrupled



Greek SME Crypteia wanted to turn research results on digital security into a commercial business



Network provided business mentoring, coaching, help to draft a business plan, advice on patents in different markets. Access to Venture Capital partners in



It works! Crypteia

Number of employees

6 (2012)
2 (2015)
6

Turnover

€23.00 (2012)
up to €241.00 (2014)
estimated at €500.00 (2015)
0

Markets they have entered

U.S.A, Africa, Middle East, Europe (UK, Germany, Cyprus, Greece + more), Balkans, Hong Kong, Latin America

Number of clients they have gained

More than 30 new enterprise clients



GTB - Global Telecoms Business Innovation Awards 2015: Business service innovation (Global network threat identification for enterprises)



October 20, 2014 PCCW Global, the international operating division of HKT, Hong Kong's premier telecommunications service provider, has acquired Crypteia Networks.

Boosting growth and creating jobs in the EU (2008 – 2014)



**11,000
companies**

have signed
business,
technology or
research
partnerships



**90,000
companies**

attended
international
brokerage events
and company
missions



**1.7
million**

people
participate
d
in events



**70,000
targeted**

business
meetings
every year



**600,000
questions**

on EU issues
answered

Boosting growth and creating jobs in the EU (2008 – 2014)



**13,000
Business
Connections**

Via B2B
matchmaking with
companies outside
the EU



**10,000
Technology**

and business
offers & requests
available



**7,000
SMEs**

Connecting
every month



**13,000
Technology**

audits and
business reviews
per year

17 key sectors

Network experts in 17 key sectors have teamed up to provide you with customised support.



Aeronautics
and space



Agrofood



Automotive,
Transport and
Logistics



BioChemTech



Creative
Industries



Environment



Healthcare



ICT Industry
& Services



Intelligent
Energy



Maritime
Industry and
Services



Materials



Nano and
micro
technologies



Services and
Retail



Sustainable
Construction



Textile & Fashion



Tourism and
Cultural
Heritage



Women
Entrepreneurshi
p



How can we help you?

Contact us

een.ec.europa.eu
www.enterprise-hellas.gr

Georgia Tzenou
E-mail:
Tzenou@ekt.gr

