

Improving the Efficiency of Enterprises and Organizations:  
Continuous Operational Improvement - Competency-  
based HR Development (Technology & Methodologies)



DEMOKRITOS  
NATIONAL CENTER FOR SCIENTIFIC RESEARCH

## FROM BUSINESS PROCESS MANAGEMENT TO COMPETENCE MANAGEMENT

ο. Univ. Prof. Dr. Prof. h.c. Dimitris Karagiannis  
[dk@dke.univie.ac.at]

Athens, December 19, 2012



universität  
wien

### Πανεπιστήμιο Βιέννης



Ιδρύθηκε από τον **Duke Rudolph IV το 1365**. Αποτελεί το παλαιότερο Πανεπιστήμιο στην γερμανόφωνη πολιτιστική περιοχή κι ένα από τα μεγαλύτερα της Κεντρικής Ευρώπης.

Το Πανεπιστήμιο της Βιέννης αποτελεί το μεγαλύτερο εκπαιδευτικό και ερευνητικό ίδρυμα της Αυστρίας, έχοντας περίπου **6200 άτομα ακαδημαϊκό προσωπικό**. Στόχος είναι η παροχή ενός ευρέος πεδίου σπουδών ως και η προώθηση νέων και καινοτόμων πεδίων ερευνών.

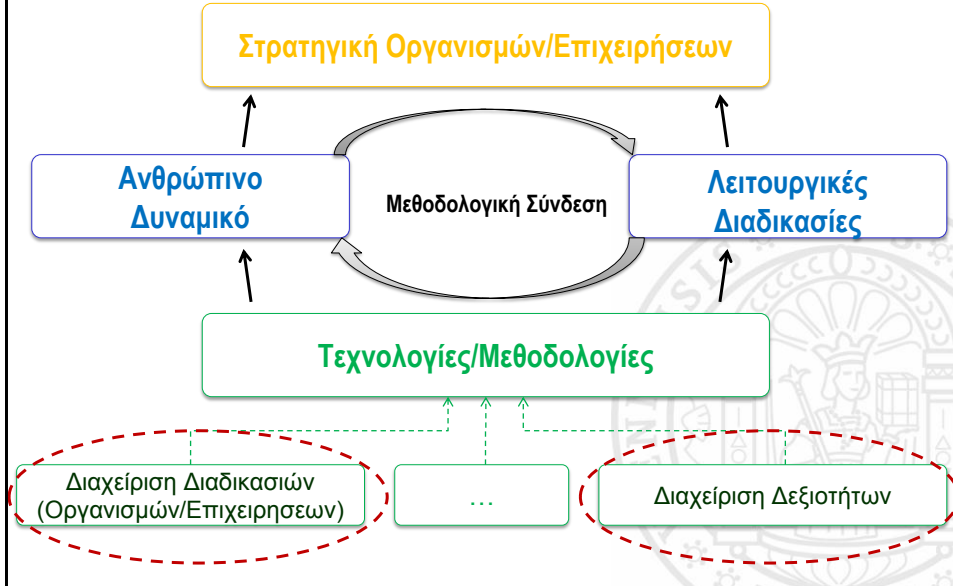


Αυτήν την στιγμή, περίπου **72,000 φοιτητές** είναι εγγεγραμμένοι σε περισσότερα από **130 τμήματα**, εκ των οποίων **34** είναι Προγράμματα Diploma, **26** προγράμματα Bachelor και 46 Μεταπτυχιακά προγράμματα.

ο.Univ.-Prof. Prof. h.c. Dr. Dimitris Karagiannis

# FOCUS: BUSINESS PROCESS MANAGEMENT & COMPETENCE MANAGEMENT

Instantiation of Management Technologies and Methodologies



# STRATEGIC GOALS: AN EXAMPLE

Aufgabenbereich	Erläuterung	BfG 2011
Zinsen für Staatsanleihen	Zinsausgaben des Bundes	7,8 Mrd. €
Zuschüsse zur gesetzlichen Pensionsversicherung (ASVG)	Stützbeitrag zur Pensionsversicherung nach ASVG, wofür ein Sozialversicherungsanstalt der Bauern, der gemeinnützigen Wirtschaft sowie Versicherungsanstalt für Bergbau- u. Bergbau-, Ausrichtungsleistungen	5,6 Mrd. €
Pensionen im Öffentl. Dienst	Pensionen für Beamte des Bundes und Erhalter an die Länder für Pensionen der Landesbeamten	6,6 Mrd. €
Soziale Wohnrausch, Gesundheit	Arbeitsmarktpolitik, Familienunterstützung, Pflegegeld	15,9 Mrd. €
Ges.	Arbeitsmarktpolitik, Familienunterstützung, Pflegegeld	15,9 Mrd. €

Aufgabenbereich	Erläuterung	BfG 2011
Tourismus, Standortförderung etc.	Stützungsleistungen, Unternehmensförderung, Beiträge an internationale Finanzinstitute, Tourismusförderung	1,8 Mrd. €
Landesentwicklung	Wasser- und Hochwasserschutz, Zoonosen	3,0 Mrd. €
Wasser- und Klimaschutz	Wasser, Energie	1,0 Mrd. €
Wohnungswirtschaft	Altenheimunterstützung, Finanzierung (ohne Ertragsanteile), Ausleihzinsen (z.B. Energiebank), Kassenunterstützung, Effizienz- u. Gebäudetechnik, Rücklagenunterstützung	5,7 Mrd. €
Beitrag zur Europäischen Union	Österreichischer Beitrag zum EU-Haushalt	2,4 Mrd. €
Forschung und Wissenschaft	Unterstützung, Fachhochschulen, Technologie- u. Forschungsförderung u. Förderung von Forschungseinrichtungen	4,7 Mrd. €
Erhaltung & Instandhaltung, Kultur, Kultur	Schulen, Museen, Kirchen	3,9 Mrd. €
Länder und Gemeinden (Ertragsanteile)	Erträge aus gemeinschaftlichen Betriebsleistungen, die auf Länder und Gemeinden entfallen	21,2 Mrd. €

**Public Care, Health Care 15,9 Mrd. €**

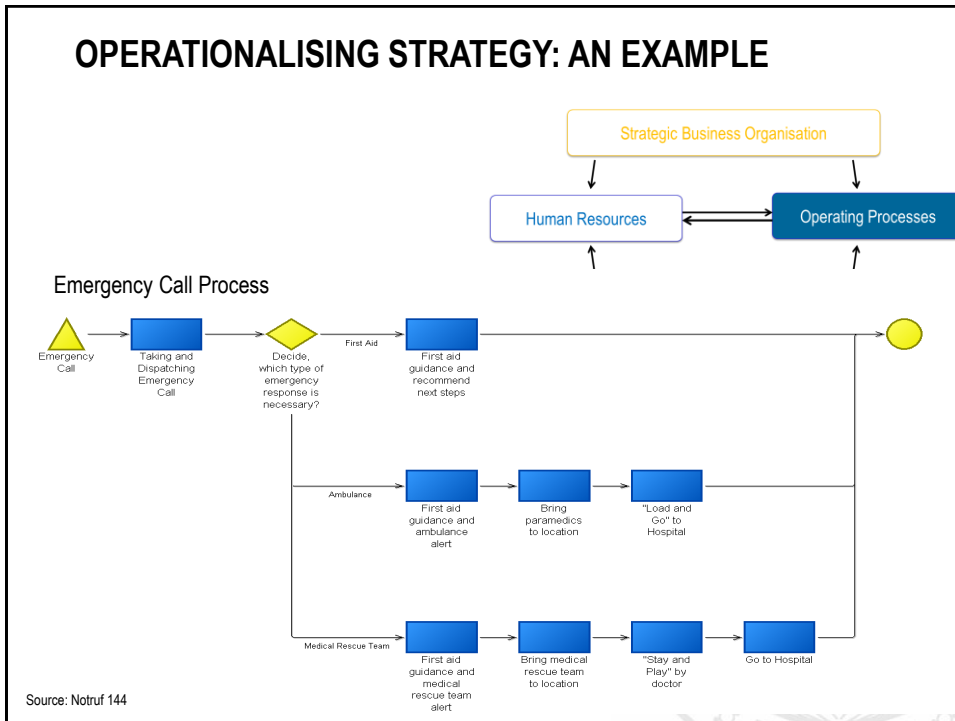
Strategic Business Organisation

Human Resources ↔ Operating Processes

Technologies/Methodologies

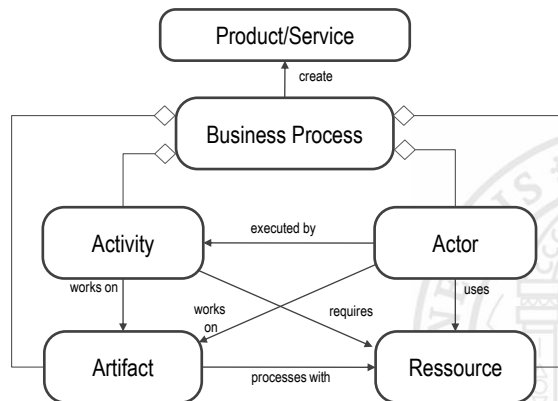
Business Process Management    Competence Management    ...

## OPERATIONALISING STRATEGY: AN EXAMPLE



## DEFINITION: BUSINESS PROCESS

A business process is a sequence of activities, which are executed by actors to create products by working on artifacts and by using resources. [KK01]



[KK01] Kühn, Harald; Karagiannis, Dimitris (2001): Modellierung und Simulation von Geschäftsprozessen. In: WISU – Das Wirtschaftsstudium, 8-9/2001, S. 1161-1170.

## Οι λειτουργικές διαδικασίες ως πλατφόρμα ενσωμάτωσης γνώσεων

*Μία λειτουργική διαδικασία είναι ...*

... όχι μόνο η λογική διαδοχή δραστηριοτήτων, που πρέπει να εκτελεστούν από ρόλους σε μία συγκεκριμένη χρονική στιγμή, σε ένα καθορισμένο μέρος...

... αλλά...

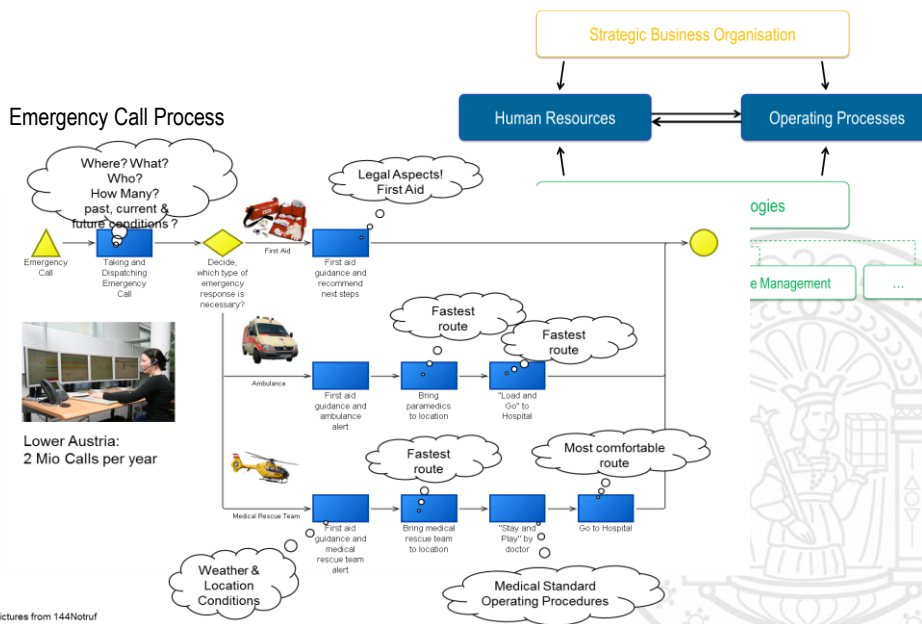
*... η τεχνογνωσία ενός οργανισμού...*



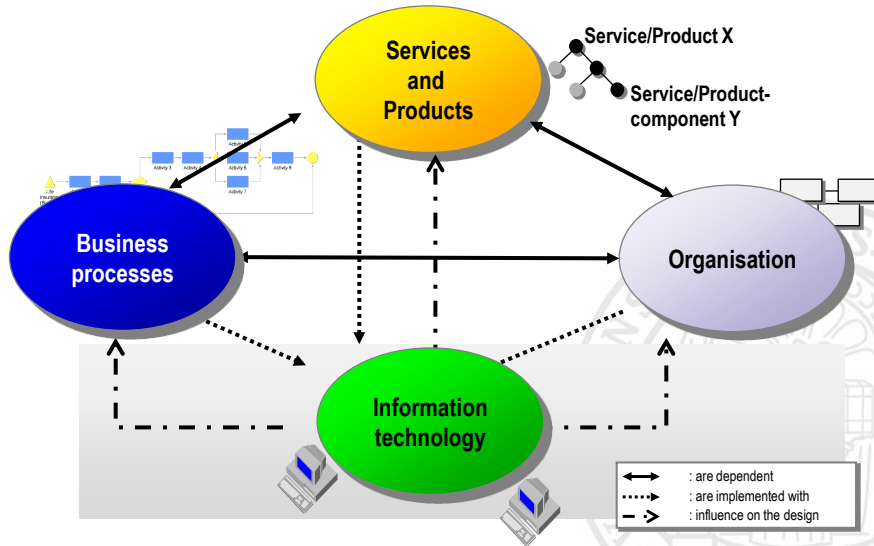
... και η οποία θα πραγματοποιηθεί μέσω αλυσίδων αξίας (value chains) προκειμένου να επιτευχθούν οι στρατηγικοί στόχοι ενός οργανισμού.

Source: Karagiannis, 2000

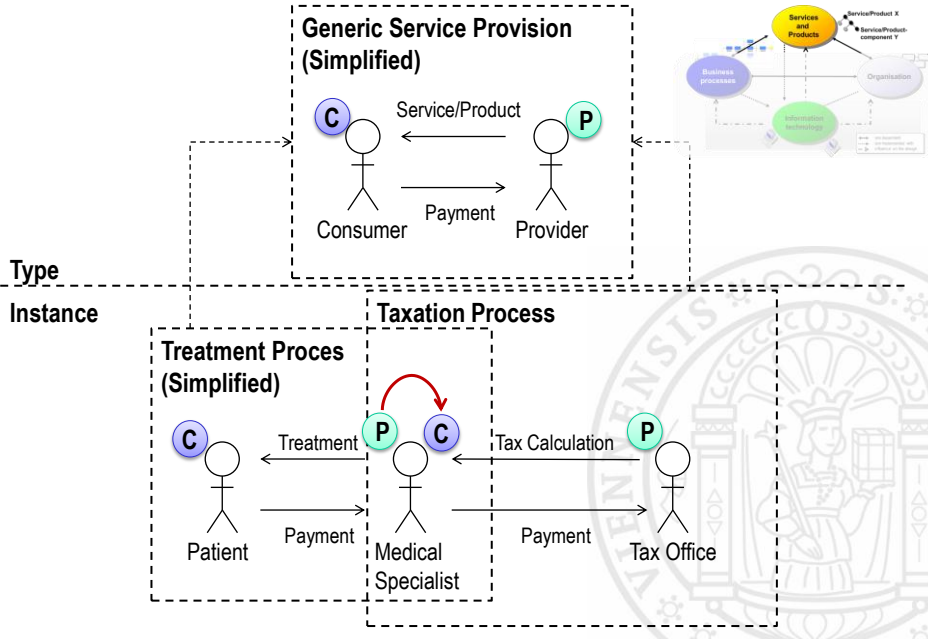
## BUSINESS- AND ORGANISATIONAL MODELS: A KNOWLEDGE VIEW



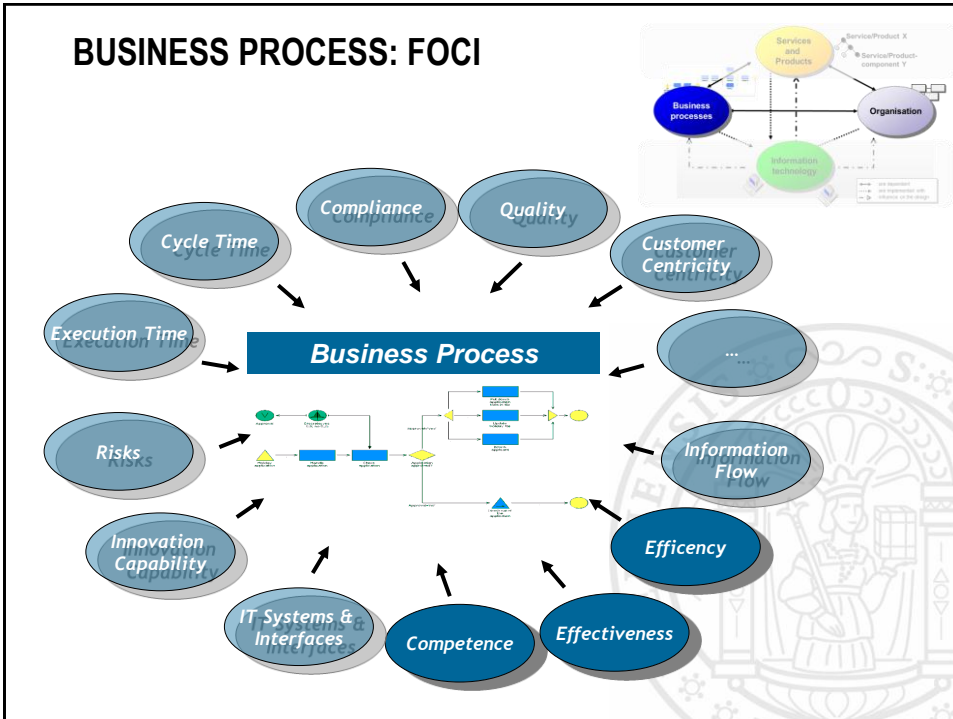
# BUSINESS PROCESS MANAGEMENT: CORE ELEMENTS



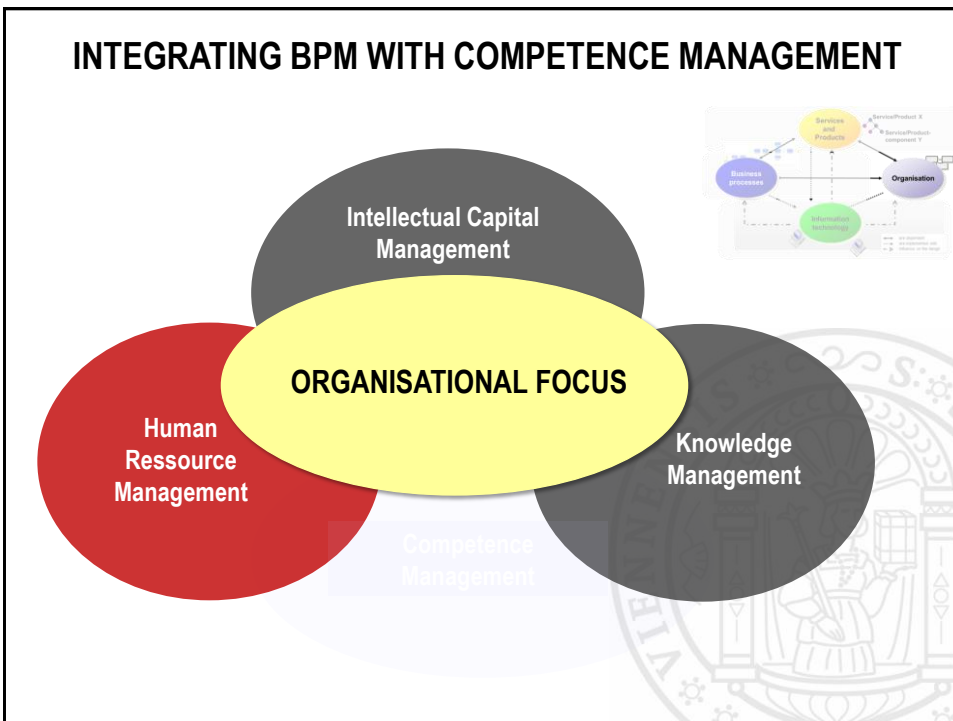
# CONSUMER VS. PROVIDER – ONLY A CULTURAL ISSUE?



## BUSINESS PROCESS: FOCI



## INTEGRATING BPM WITH COMPETENCE MANAGEMENT

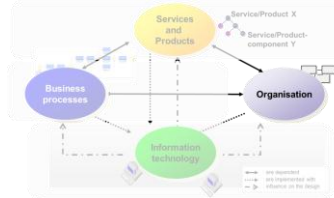


# Organisational Focus

## Example: Austrian Ministry of Finance



**Employees and Locations (2011)**  
 # of Employees (overall): 12.052 (Planstellen)  
 # of employees (tax offices): 6800  
 # of tax offices: 41  
 # of locations: 80  
 average # of employees/tax office: 200



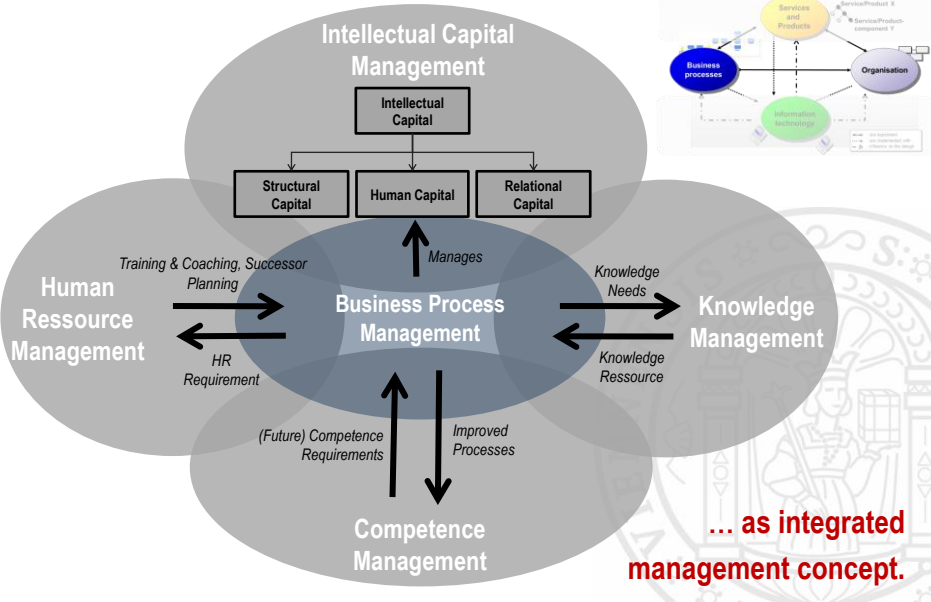
**Volume (2009) - Einkommenssteuer**  
 # of cases handled: 872.422 (Veranlagungsfälle – cases that are not directly handled through the employer)  
 tax volume through this cases: EUR 25,4 billion

**Common IT Infrastructure (BRZ)**  
 # of locations: 1.200  
 # of workplaces supported: 30.000  
 # of implemented solutions: >300  
 # of servers: >2000

**Volume (2009) - Lohnsteuer**  
 # of taxable people (employed positions): 6.461.772  
 tax volume through this cases: EUR 160.777,6 billion

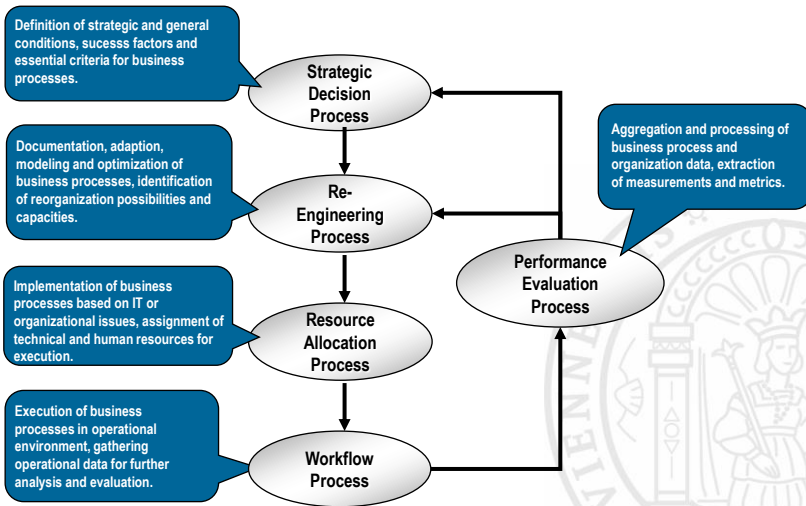
- Sources:
- [http://www.bmf.gv.at/JobsKarriere/ArbeitenimFinanzres\\_12386/DieArbeitsFinanzamt/\\_start.htm](http://www.bmf.gv.at/JobsKarriere/ArbeitenimFinanzres_12386/DieArbeitsFinanzamt/_start.htm)
  - [http://www.bmf.gv.at/BUDGET/budgets/2011/Beilagen/Personal\\_des\\_Bundes.pdf](http://www.bmf.gv.at/BUDGET/budgets/2011/Beilagen/Personal_des_Bundes.pdf)
  - [http://www.statistik.at/web\\_de/statistiken/oeffentliche\\_finanzen\\_und\\_steuern/steuerstatistiken/](http://www.statistik.at/web_de/statistiken/oeffentliche_finanzen_und_steuern/steuerstatistiken/)
  - <http://www.brz.gv.at/Portal.Node/brz/public/content/unternehmen/zahlenfakten/7656.html>

# INTEGRATING BPM WITH COMPETENCE MANAGEMENT



## The BPMS Methodology LifeCycle

Implementing Business Process Management



## BPMS METHODOLOGY: THE PMLC LIFECYCLE

An Enterprise Example



Deutsche Bank



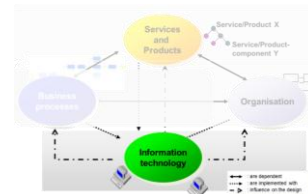


# TECHNOLOGY



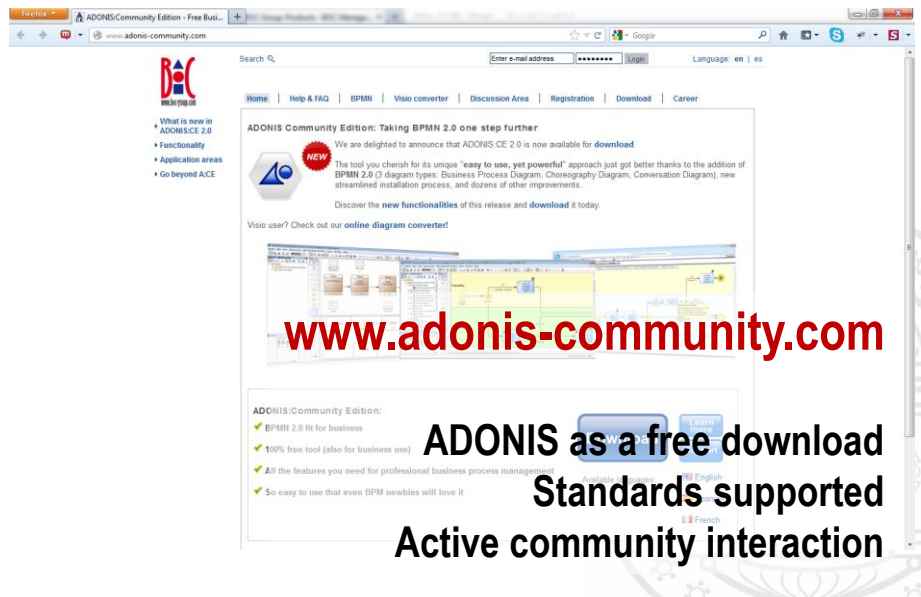
## TECHNOLOGY: BUSINESS TRANSFORMATION

Moving from a technology-oriented thinking and design to a social requirements-oriented model



Source: Nokia, [www.nokia.com](http://www.nokia.com)

## TECHNOLOGY: BPM TOOL SUPPORT



The screenshot shows the website [www.adonis-community.com](http://www.adonis-community.com). The main content area features a news item titled "ADONIS Community Edition: Taking BPMN 2.0 one step further". The text states: "We are delighted to announce that ADONIS CE 2.0 is now available for download. The tool you cherish for its unique 'easy to use, yet powerful' approach just got better thanks to the addition of BPMN 2.0 (3) diagram types: Business Process Diagram, Choreography Diagram, Conversation Diagram), new streamlined installation process, and dozens of other improvements. Discover the new functionalities of this release and download it today." Below the text is a screenshot of the software interface. A large red watermark [www.adonis-community.com](http://www.adonis-community.com) is overlaid on the page. At the bottom, there is a list of features for ADONIS:Community Edition:

- ✓ BPMN 2.0 fit for business
- ✓ 100% free tool (also for business use)
- ✓ All the features you need for professional business process management
- ✓ So easy to use that even BPMN newbies will love it

Overlaid on the bottom right of the screenshot is the text: **ADONIS as a free download**, **Standards supported**, and **Active community interaction**.

## TECHNOLOGY: HOW TO SUPPORT COMPETENCES

A BEST PRACTICE CASE FOR IT SERVICE MANAGEMENT COMPETENCES IN SMES

Innovation Training IT Central Europe  
**INNOTRAIN IT**

**CENTRAL EUROPE**  
EUROPEAN UNION  
EUROPEAN REGIONAL  
DEVELOPMENT FUND

This project is implemented through the  
CENTRAL EUROPE Programme co-financed by the ERDF.

## Project Premise

Innovation Training IT Central Europe  
**INNOTRAIN IT**

- 85% of net new jobs in the EU between 2002 and 2010 were created by small and medium sized enterprises (SMEs).\*
- SMEs represent 99% of all European Enterprises.\*

**BUT**

**Europe needs more entrepreneurs, more innovation  
and more high-growth SMEs**



### INNOTRAIN IT Approach:

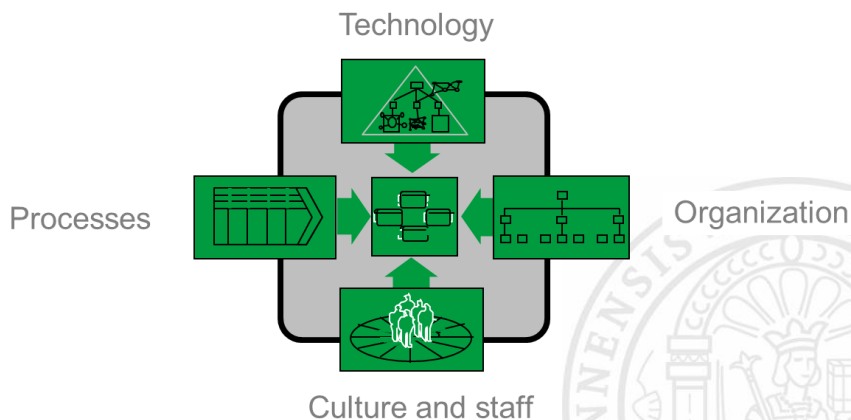
- Provide **knowledge to SMEs** in a high-growth, innovative domain: **ICT/ITSM**
- Provide a **method and tool for IT Service Management** tailored to SME's needs
- Support **competence building through trainings and consulting**

CENTRAL EUROPE  
EUROPEAN UNION  
EUROPEAN REGIONAL  
DEVELOPMENT FUND  
Innovation Training IT Central Europe  
Central Europe Programme co-financed by the ERDF

[http://ec.europa.eu/enterprise/policies/sme/promoting-entrepreneurship/index\\_en.htm](http://ec.europa.eu/enterprise/policies/sme/promoting-entrepreneurship/index_en.htm)

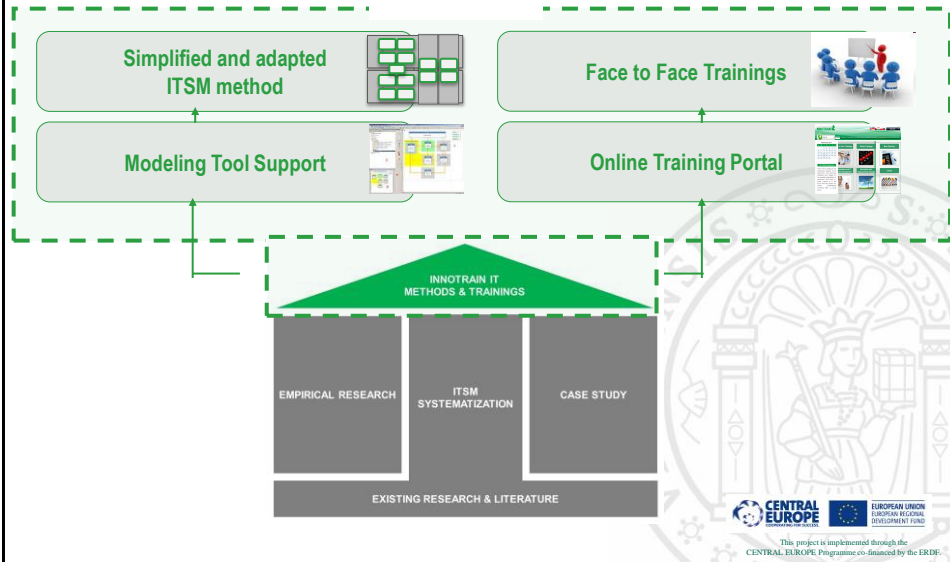
## Introduction of ITSM: Aspects which require consideration

Innovation Training IT Central Europe  
**INNOTRAIN IT**

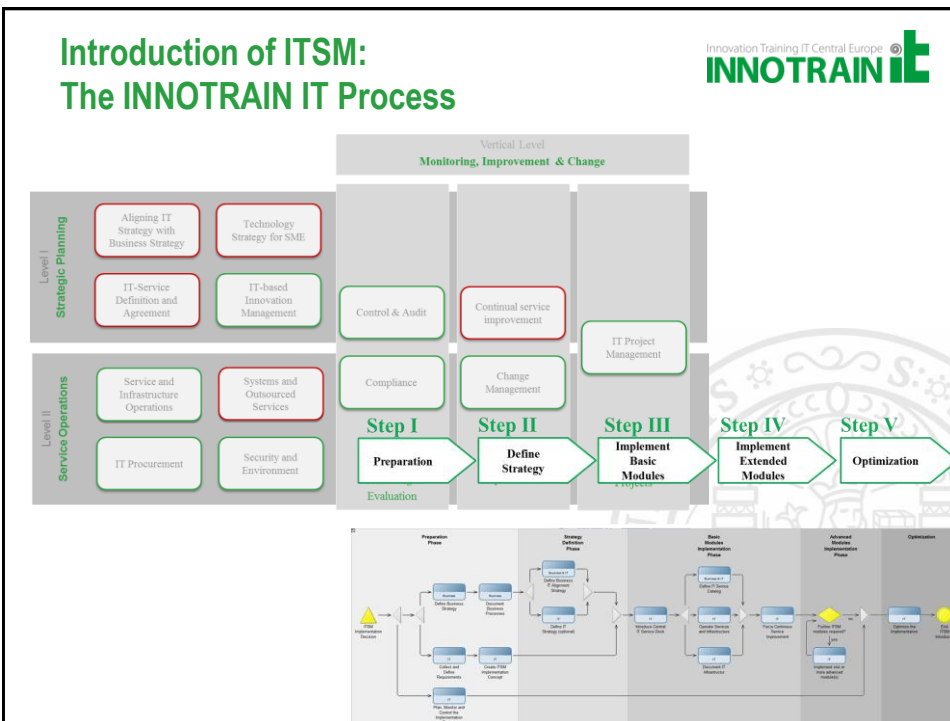


A key to successful ITSM implementation is  
balancing these four factors.

# The INNOTRAIN IT Concept



# Introduction of ITSM: The INNOTRAIN IT Process



Introduction of ITSM: INNOVATION TRAINING

Innovation Training IT Central Europe  
**INNOTRAIN it**

Free trainings and training materials are available under [www.innotrain-it.eu](http://www.innotrain-it.eu)

Face-to-Face Training

Module 1 – Basics:  
ITSM – Potentials for your business

- > ITSM in SMEs
- > Simplify the IT and raise the effectiveness with ITSM
- > Workshops: Modeling and optimising business processes
- > Best Practices: How do other SMEs use ITSM?

Online Training

Modelling Tool

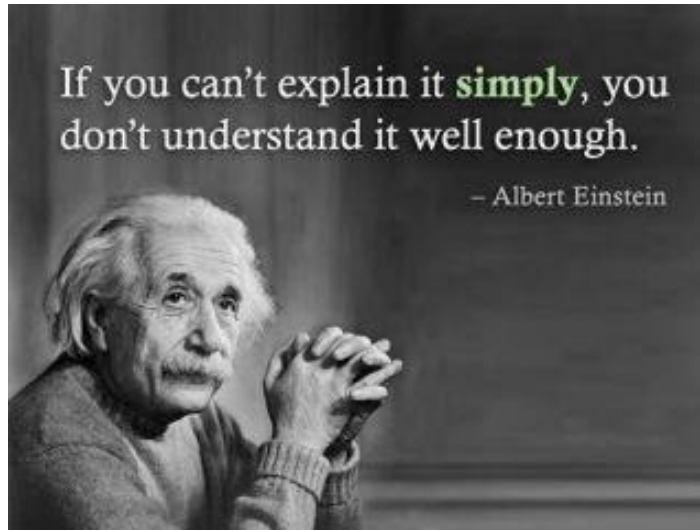
ITSM Cluster for SMEs

## CONCLUSIONS

Moving from the development of teams to the development of communities

Source: <http://life-coaching-club.com/>

## EVALUATION



**THANK YOU FOR YOUR ATTENTION!**



universität  
wien

**Dimitris Karagiannis**

University of Vienna  
Faculty of Computer Science  
Research Group Knowledge Engineering  
Währinger Str. 29  
A-1090 Vienna  
Tel.: ++43-1-4277-789 10  
Fax: ++43-1-4277-8789 10  
Email: [dk@dke.univie.ac.at](mailto:dk@dke.univie.ac.at)  
Web: <http://www.dke.univie.ac.at>

